

ALBANY POLICE DEPARTMENT CRIME ANALYSIS

“Combating Crime and Protecting Lives”

Prepared By the Crime Analysis Unit of The Albany Police Department

****These numbers may be updated from month to month as records updates occur****

2015

Month of January

Distribution: CITY MANAGER, ASST. CITY MANAGERS

CHIEF OF POLICE
DEPUTY CHIEF - INVESTIGATIVE
DEPUTY CHIEF – UNIFORM
DEPUTY CHIEF – SUPPORT SERVICES
MAJOR - INTERNAL AFFAIRS
INVESTIGATIONS CAPTAINS
UNIFORM CAPTAINS
ACCREDITATION MANAGER

SPECIAL OPERATIONS CAPT.
FAMILY PROTECTION
RECORDS SUPERVISOR
PLANNING & RESEARCH
TRAINING SUPERVISOR
CHIEF'S ADMIN ASSISTANT
SUPPORT SERVICES LT

***Information Included in this Report Reflects
Compliance with UCR Reporting Standards**

The information contained in this report is primarily raw data until calendar year reporting.

Please contact David Sparks, APD Crime Analyst for questions regarding this report @ 431-2878.

Monthly Part I Crimes

Albany Police Department

Part I Crimes Committed During the Month of January 2015 with Comparisons of January 2014 & 2013

Actual Offenses	2015 Month to Month		2014 Month to Month		+/- Change		2013 Month to Month		2014 Month to Month		+/- Change	
Offenses Committed	January 2015	January 2014	#	%	January 2015	January 2013	#	%	January 2015	January 2013	#	%
Homicide	1	1	0	0.00	1	0	1	*NC	1	0	1	*NC
Rape	2	1	1	100.00	2	1	1	100.00	2	1	1	100.00
Robbery	10	16	-6	-37.50	10	16	-6	-37.50	10	16	-6	-37.50
Aggravated Assault	42	49	-7	-14.29	42	42	0	0.00	42	42	0	0.00
Violent Crime Total	55	67	-12	-17.91	55	59	-4	-6.78	55	59	-4	-6.78
Arson	2	0	2	*NC	2	2	0	0.00	2	2	0	0.00
Burglary	101	114	-13	-11.40	101	103	-2	-1.94	101	103	-2	-1.94
Larceny	211	229	-18	-7.86	211	314	-103	-32.80	211	314	-103	-32.80
Auto Theft	20	20	0	0.00	20	12	8	66.67	20	12	8	66.67
Property Crime Total	334	363	-29	-7.99	334	431	-97	-22.51	334	431	-97	-22.51
Crime Trend Total	389	430	-41	-9.53	389	490	-101	-20.61	389	490	-101	-20.61

Part I Case Clearances During the Month of January 2015 with Comparisons of January 2014 & 2013

	2015	2014	2013	2015	2014	2013
Offenses Cleared	January # Cleared	January # Cleared	January # Cleared	January % Cleared	January % Cleared	January % Cleared
Homicide	1	2	0	100.00%	200.00%	*NC
Rape	2	1	2	100.00%	100.00%	200.00%
Robbery	1	2	7	10.00%	12.50%	43.75%
Aggravated Assault	23	20	20	54.76%	40.82%	47.62%
Violent Crime Cleared	27	25	29	49.09%	37.31%	49.15%
Arson	2	0	1	100.00%	*NC	50.00%
Burglary	13	12	8	12.87%	10.53%	7.77%
Larceny	50	46	52	23.70%	20.09%	16.56%
Auto Theft	5	6	2	25.00%	30.00%	16.67%
Property Crime Cleared	70	64	63	20.96%	17.63%	14.62%
Clearance Total	97	89	92	24.94%	20.70%	18.78%

* The Crime Trend and Clearance Totals do not include percentages for numbers not divisible by 0.

Year to Date Part I Crimes

Albany Police Department

Part I Crimes Committed Year-to-date as of January 2015 with Comparisons of January 2014 & 2013									
Actual Offenses	2015 2014 Year to Date		+/- Change			2015 2013 Year to Date		+/- Change	
	January 2015	January 2014	#	%		January 2015	January 2013	#	%
Offenses Committed									
Homicide	1	1	0	0.00		1	0	1	*NC
Rape	2	1	1	100.00		2	1	1	100.00
Robbery	10	16	-6	-37.50		10	16	-6	-37.50
Aggravated Assault	42	49	-7	-14.29		42	42	0	0.00
Violent Crime Total	55	67	-12	-17.91		55	59	-4	-6.78
Arson	2	0	2	*NC	2	2	0	0.00	
Burglary	101	114	-13	-11.40	101	103	-2	-1.94	
Larceny	211	229	-18	-7.86	211	314	-103	-32.80	
Auto Theft	20	20	0	0.00	20	12	8	66.67	
Property Crime Total	334	363	-29	-7.99	334	431	-97	-22.51	
Crime Trend Total	389	430	-41	-9.53	389	490	-101	-20.61	

Part I Case Clearances Year-to-date as of January 2015 with Comparisons of January 2014 & 2013								
Offenses Cleared	2015	2014	2013		2015	2014	2013	
	January # Cleared	January # Cleared	January # Cleared		January % Cleared	January % Cleared	January % Cleared	
Homicide	1	2	0		100.00%	200.00%	*NC	
Rape	2	1	2		100.00%	100.00%	200.00%	
Robbery	1	2	7		10.00%	12.50%	43.75%	
Aggravated Assault	23	20	20		54.76%	40.82%	47.62%	
Violent Crime Cleared	27	25	29		49.09%	37.31%	49.15%	
Arson	2	0	1		100.00%	*NC	50.00%	
Burglary	13	12	8		12.87%	10.53%	7.77%	
Larceny	50	46	52		23.70%	20.09%	16.56%	
Auto Theft	5	6	2		25.00%	30.00%	16.67%	
Property Crime Cleared	70	64	63		20.96%	17.63%	14.62%	
Clearance Total	97	89	92		24.94%	20.70%	18.78%	

* The Crime Trend and Clearance Totals do not include percentages for numbers not divisible by 0.

Monthly Part II and Other Crimes

Albany Police Department

Part II Crime Comparison of January 2014 Data with Previous Year/Month									
Part II Crimes	January 2015	January 2014	+/- #	Change %		January 2015	December 2014	+/- #	Change %
Disorderly Conduct	59	40	19	47.50		59	49	10	20.41
Domestic Violence	168	93	75	80.65		168	113	55	48.67
Disorderly w/intoxicated	0	0	0	*NC		0	0	0	*NC
D.U.I.	10	12	-2	-16.67		10	10	0	0.00
Child Molestation	1	9	-8	-88.89		1	1	0	0.00
Cruelty to Child	4	5	-1	-20.00		4	4	0	0.00
Child Protec: Curfew	0	0	0	*NC		0	0	0	*NC
Child Protec:Truancy	0	0	0	*NC		0	0	0	*NC
Interfere w/Custody	16	0	16	*NC		16	7	9	128.57
Child Abandonment	0	0	0	*NC		0	1	-1	-100.00
Enticing a Child	0	0	0	*NC		0	1	-1	-100.00
Forgery	11	9	2	22.22		11	13	-2	-15.38
Noise Ordinance Viol.	0	0	0	*NC		0	0	0	*NC
Harassing Phone Calls	3	6	-3	-50.00		3	8	-5	-62.50
Loitering	1	3	-2	-66.67		1	3	-2	-66.67
Missing Persons	22	9	13	144.44		22	24	-2	-8.33
Runaway	0	2	-2	-100.00		0	0	0	*NC
Suicide	0	0	0	*NC		0	2	-2	-100.00
Underage Poss./Consum.	0	0	0	*NC		0	0	0	*NC
Criminal Damage	16	21	-5	-23.81		16	19	-3	-15.79
Theft: Gas Drive Off	1	1	0	0.00		1	0	1	*NC
Simple Assault	3	8	-5	-62.50		3	3	0	0.00
Simple Battery	77	88	-11	-12.50		77	67	10	14.93
Battery	20	18	2	11.11		20	29	-9	-31.03
Obstruct/Hinder Police	13	21	-8	-38.10		13	7	6	85.71
Sexual Battery	0	1	-1	-100.00		0	1	-1	-100.00
Open Container	11	8	3	37.50		11	10	1	10.00
Sodomy	1	0	1	*NC		1	0	1	*NC
Statutory Rape	1	1	0	0.00		1	0	1	*NC
Saggy Pants	3	7	-4	-57.14		3	0	3	*NC
All Cases Not Listed	542	564	-22	-3.90		542	439	103	23.46
Total Part II Crime	983	926	57	6.16		983	811	172	21.21

** The Crime Trend and Clearance Totals do not include percentages for numbers not able to be divided by 0.

Year to Date Part II and Other Crimes

Albany Police Department

Part II Crime Comparison of January 2015 with Previous Januarys of 2014 & 2013									
Part II Crimes	January 2015	January 2014	+/- #	Change %		January 2015	January 2013	+/- #	Change %
Disorderly Conduct	59	40	19	47.50		59	62	-3	-4.84
Domestic Violence	168	93	75	80.65		168	178	-10	-5.62
Disorderly wh/intoxicated	0	0	0	*NC		0	0	0	*NC
D.U.I.	10	12	-2	-16.67		10	7	3	42.86
Child Molestation	1	9	-8	-88.89		1	3	-2	-66.67
Child Cruelty	4	5	-1	-20.00		4	3	1	33.33
Curfew	0	0	0	*NC		0	0	0	*NC
Truancy	0	0	0	*NC		0	0	0	*NC
Interfere w/Custody	16	0	16	*NC		16	1	15	1500.00
Child Abandonment	0	0	0	*NC		0	0	0	*NC
Enticing a Child	0	0	0	*NC		0	0	0	*NC
Forgery	11	9	2	22.22		11	13	-2	-15.38
Noise Ordinance Viol.	0	0	0	*NC		0	0	0	*NC
Harassing Phone Calls	3	6	-3	-50.00		3	8	-5	-62.50
Loitering	1	3	-2	-66.67		1	3	-2	-66.67
Missing Persons	22	9	13	144.44		22	22	0	0.00
Runaway	0	2	-2	-100.00		0	1	-1	-100.00
Suicide	0	0	0	*NC		0	0	0	*NC
Underage Poss./Consum.	0	0	0	*NC		0	4	-4	-100.00
Criminal Damage	16	21	-5	-23.81		16	24	-8	-33.33
Theft: Gas Drive Off	1	1	0	0.00		1	1	0	0.00
Simple Assault	3	8	-5	-62.50		3	10	-7	-70.00
Simple Battery	77	88	-11	-12.50		77	88	-11	-12.50
Battery	20	18	2	11.11		20	33	-13	-39.39
Obstruction of Officer	13	21	-8	-38.10		13	17	-4	-23.53
Sexual Battery	0	1	-1	-100.00		0	0	0	*NC
Open Container	11	8	3	37.50		11	10	1	10.00
Sodomy	1	0	1	*NC		1	1	0	0.00
Statutory Rape	1	1	0	0.00		1	1	0	0.00
Saggy Pants	3	7	-4	-57.14		3	7	-4	-57.14
All Other Cases	542	564	-22	-3.90		542	576	-34	-5.90
Total Part II Crime	983	926	57	6.16		983	1073	-90	-8.39

** The Crime Trend and Clearance Totals do not include percentages for numbers not able to be divided by 0.

Monthly Part I Crimes by District

Albany Police Department

January 2015

West Actual Offenses			
Offenses Committed	January 2015	December 2014	Year to Date 2015
Homicide	0	1	0
Rape	2	0	2
Robbery	3	3	3
Aggravated Assault	7	24	7
Violent Crime Total	12	28	12
Arson	0	0	0
Burglary	33	34	33
Larceny	85	77	85
Auto Theft	5	4	5
Property Crime Tot.	123	115	123
Crime Trend Total	135	143	135

Central Actual Offenses			
Offenses Committed	January 2015	December 2014	Year to Date 2015
Homicide	1	1	1
Rape	0	0	0
Robbery	6	5	6
Aggravated Assault	20	33	20
Violent Crime Total	27	39	27
Arson	1	0	1
Burglary	25	26	25
Larceny	74	59	74
Auto Theft	7	5	7
Property Crime Tot.	107	90	107
Crime Trend Total	134	129	134

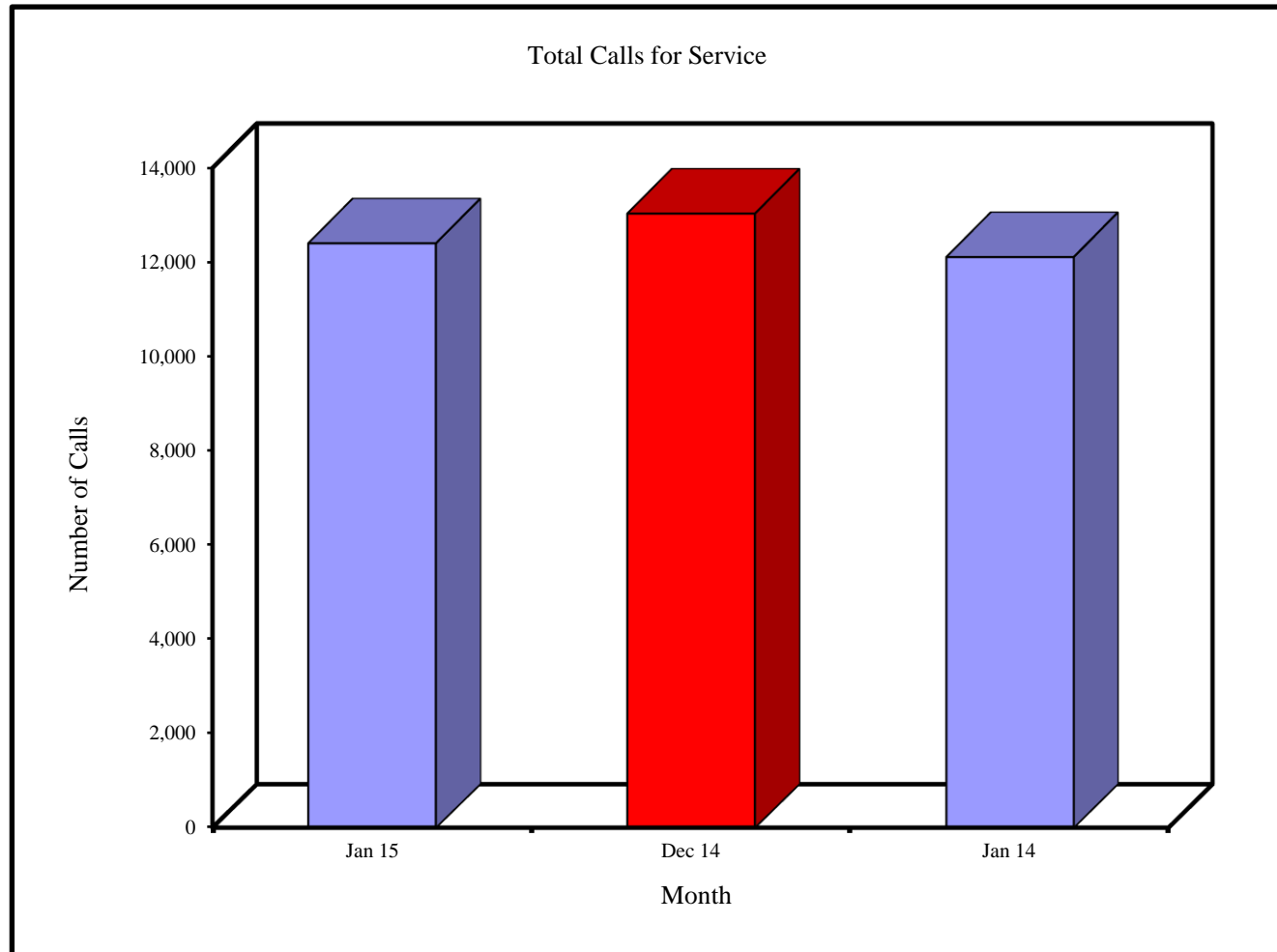
East Actual Offenses			
Offenses Committed	January 2015	December 2014	Year to Date 2015
Homicide	0	0	0
Rape	0	1	0
Robbery	1	2	1
Aggravated Assault	15	18	15
Violent Crime Total	16	21	16
Arson	1	2	1
Burglary	43	37	43
Larceny	52	65	52
Auto Theft	8	6	8
Property Crime Tot.	104	110	104
Crime Trend Total	120	131	120

Monthly Total Calls for Service

Albany Police Department

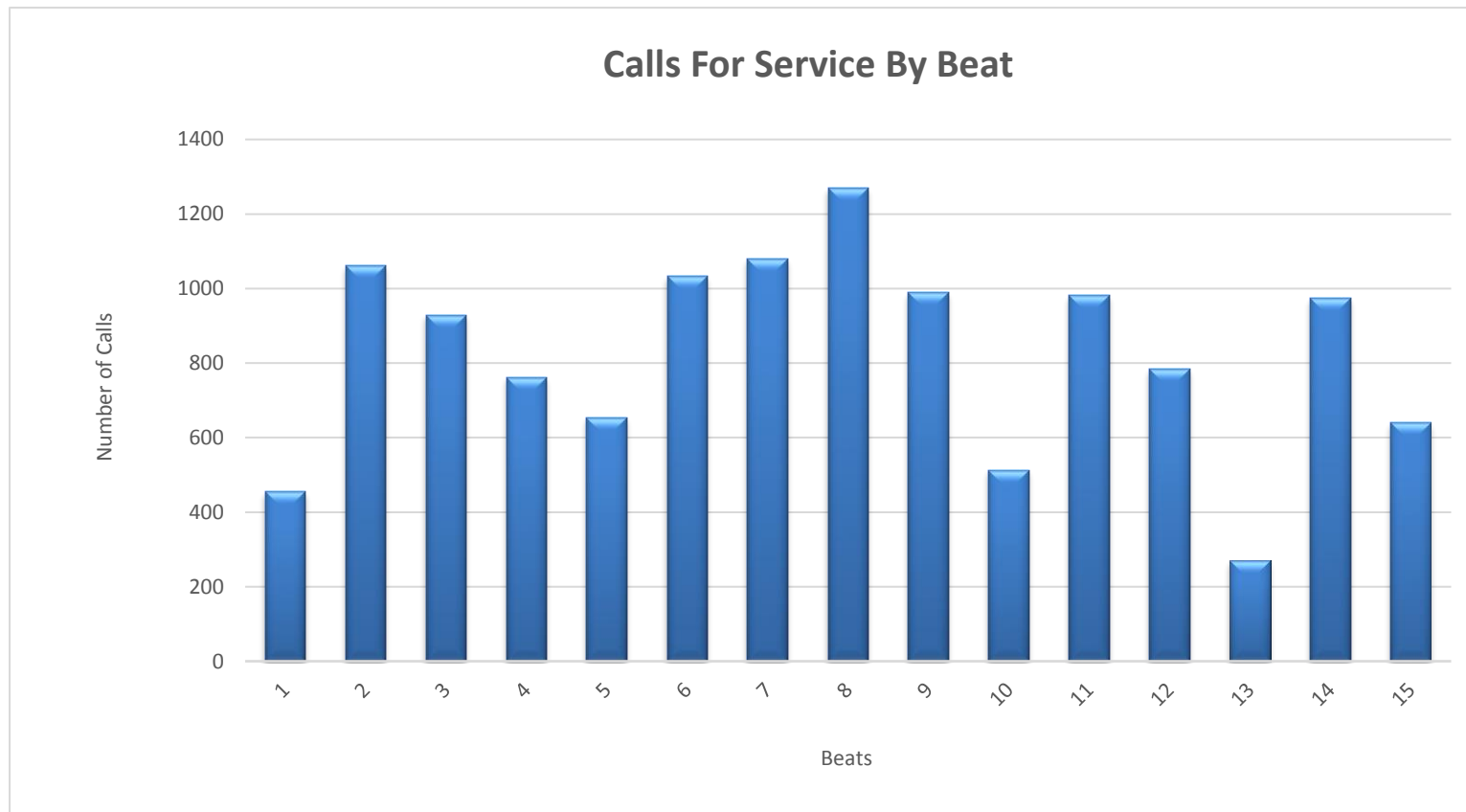
Total Calls For Service

Jan 15	Dec 14	Jan 14
12,410	13,038	12,120



Monthly Calls for Service by Beats

Albany Police Department

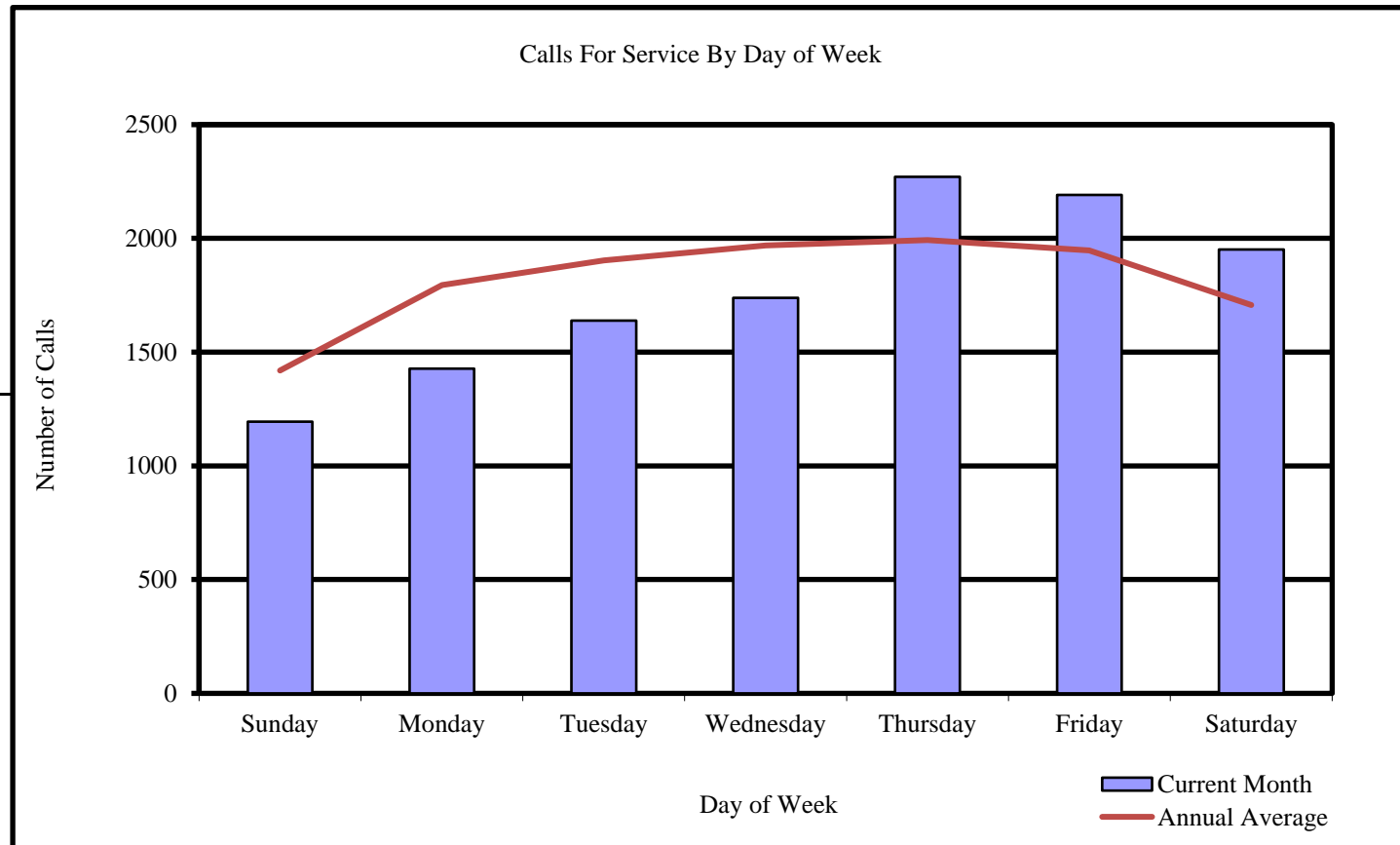


Beats	1	2	3	4	5	6	7	8	9	10	11	12	13	14	15
Calls in January 2015	454	1061	929	762	654	1032	1079	1269	989	513	981	783	270	974	639

Monthly Calls for Service by Day of Week

Albany Police Department

<u>Calls For Service</u>	
Day	January 2015
Sunday	1194
Monday	1428
Tuesday	1638
Wednesday	1738
Thursday	2270
Friday	2191
Saturday	1951
	<hr/> 12410

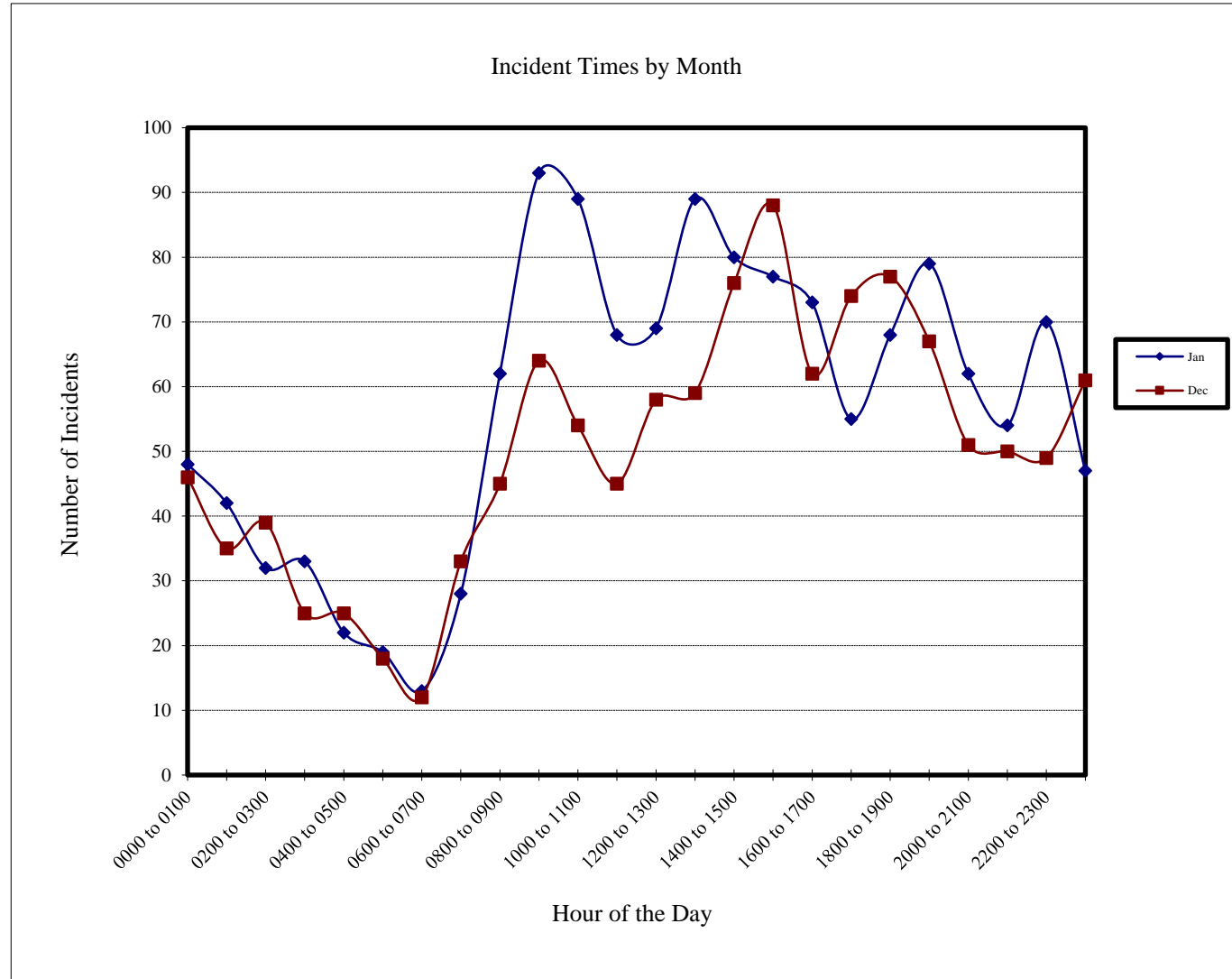


Incidents by Hour

Albany Police Department

Incident Times by Month

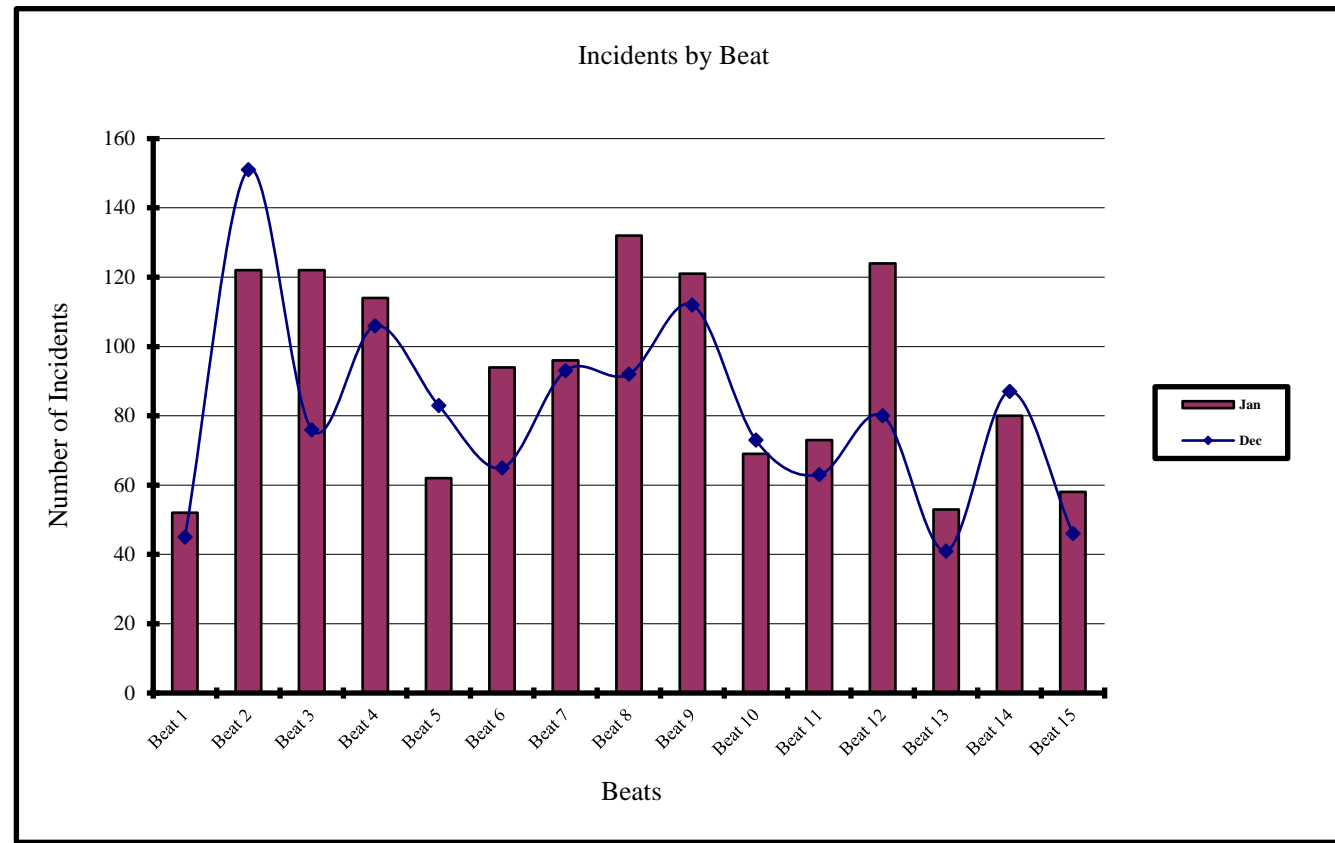
Hour of Day	Jan 2015	Dec 2014
0000 to 0100	48	46
0100 to 0200	42	35
0200 to 0300	32	39
0300 to 0400	33	25
0400 to 0500	22	25
0500 to 0600	19	18
0600 to 0700	13	12
0700 to 0800	28	33
0800 to 0900	62	45
0900 to 1000	93	64
1000 to 1100	89	54
1100 to 1200	68	45
1200 to 1300	69	58
1300 to 1400	89	59
1400 to 1500	80	76
1500 to 1600	77	88
1600 to 1700	73	62
1700 to 1800	55	74
1800 to 1900	68	77
1900 to 2000	79	67
2000 to 2100	62	51
2100 to 2200	54	50
2200 to 2300	70	49
2300 to 2400	47	61



Current and Previous Months Comparison of Incidents by Beat

Albany Police Department

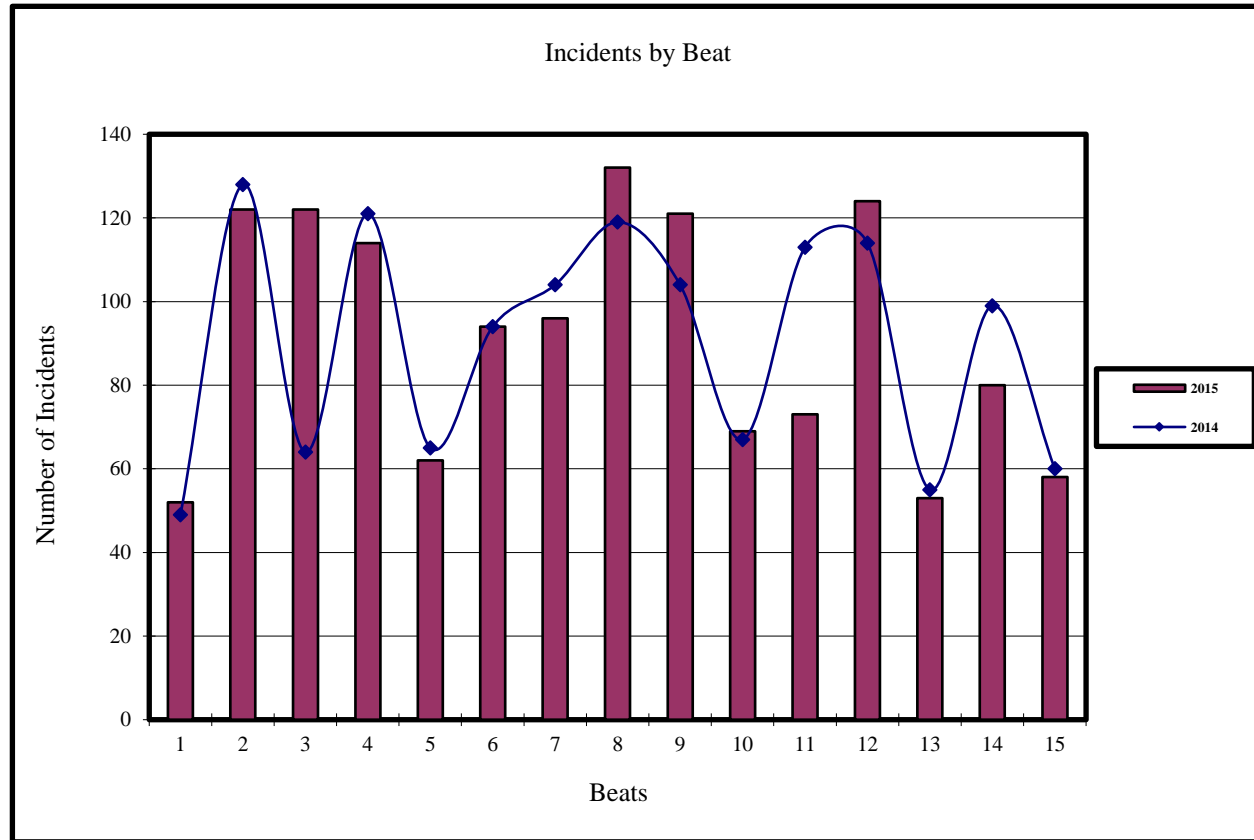
Beat	Incidents	
	Jan 2015	Dec 2014
Beat 1	52	45
Beat 2	122	151
Beat 3	122	76
Beat 4	114	106
Beat 5	62	83
Beat 6	94	65
Beat 7	96	93
Beat 8	132	92
Beat 9	121	112
Beat 10	69	73
Beat 11	73	63
Beat 12	124	80
Beat 13	53	41
Beat 14	80	87
Beat 15	58	46



Current and Previous Year Comparision of Incidents by Beat

Albany Police Department

Incidents		
Beat	Jan 2015	Jan 2014
Beat 1	52	49
Beat 2	122	128
Beat 3	122	64
Beat 4	114	121
Beat 5	62	65
Beat 6	94	94
Beat 7	96	104
Beat 8	132	119
Beat 9	121	104
Beat 10	69	67
Beat 11	73	113
Beat 12	124	114
Beat 13	53	55
Beat 14	80	99
Beat 15	58	60



Current and Previous Month Comparison of Monthly Incidents by Day of Week Albany Police Department

Incidents		
Day	Jan 2015	Dec 2014
Sunday	152	169
Monday	152	182
Tuesday	186	177
Wednesday	184	169
Thursday	238	159
Friday	225	185
Saturday	228	172

